

## Scale and arpeggio patterns

The examples on the following pages clarify patterns and ranges found in this syllabus. Reference should be made to the appropriate syllabus pages for the full requirements for each instrument.

### All instruments

#### Scales and arpeggios

one octave and down to the dominant (*recorder only*)



to a twelfth (and similarly, two and a half octaves)



#### Scales in thirds

one octave (and similarly, two or three octaves)



to a twelfth



*Bassoon: ending for Bb major*



*Treble recorder: ending for F major*



#### Chromatic scales

to a twelfth (and similarly, two and a half octaves)



#### Dominant sevenths (resolving on tonic)

one octave (and similarly, two or three octaves)



to a twelfth (and similarly, two and a half octaves)



#### Diminished sevenths

to a twelfth (and similarly, two and a half octaves)



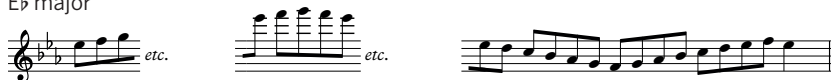
## Treble Recorder

### Extended-range scales

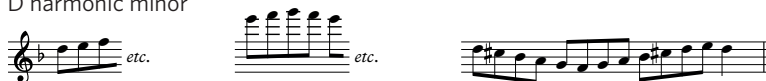
B $\flat$  major



E $\flat$  major



D harmonic minor



### Extended-range arpeggios

E $\flat$  major



D minor



## Flute

### Extended-range scales

F major



G major



F harmonic minor



### Extended-range arpeggios

G major



F minor



## Oboe

### Extended-range scales

G major

Three musical staves for G major: 1. Ascending scale (quarter notes). 2. Descending scale (quarter notes) with 'etc.' label. 3. Full scale (quarter notes) with 'etc.' label.

A $\flat$  major

Three musical staves for A-flat major: 1. Ascending scale (quarter notes). 2. Descending scale (quarter notes) with 'etc.' label. 3. Full scale (quarter notes) with 'etc.' label.

D harmonic minor

Three musical staves for D harmonic minor: 1. Ascending scale (quarter notes). 2. Descending scale (quarter notes) with 'etc.' label. 3. Full scale (quarter notes) with 'etc.' label.

### Extended-range arpeggios

A $\flat$  major

Ascending arpeggio for A-flat major (quarter notes).

D minor

Ascending arpeggio for D minor (quarter notes).

## Clarinet

### Extended-range scales

C major

Three musical staves for C major: 1. Ascending scale (quarter notes). 2. Descending scale (quarter notes) with 'etc.' label. 3. Full scale (quarter notes) with 'etc.' label.

A major

Three musical staves for A major: 1. Ascending scale (quarter notes). 2. Descending scale (quarter notes) with 'etc.' label. 3. Full scale (quarter notes) with 'etc.' label.

E harmonic minor

Three musical staves for E harmonic minor: 1. Ascending scale (quarter notes). 2. Descending scale (quarter notes) with 'etc.' label. 3. Full scale (quarter notes) with 'etc.' label.

### Extended-range arpeggios

A major

Ascending arpeggio for A major (quarter notes).

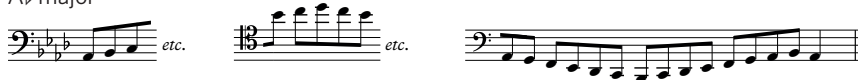
E minor

Ascending arpeggio for E minor (quarter notes).

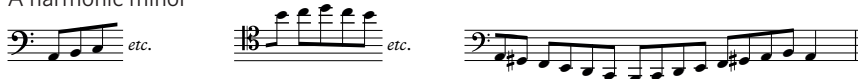
## Bassoon

### Extended-range scales

E major

A $\flat$  major

A harmonic minor



### Extended-range arpeggios

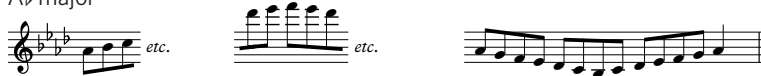
A $\flat$  major

A minor

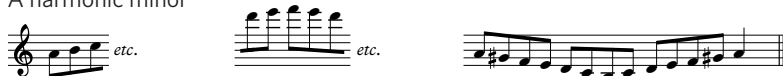


## Saxophone

### Extended-range scales

E $\flat$  majorA $\flat$  major

A harmonic minor



### Extended-range arpeggios

A $\flat$  major

A minor

